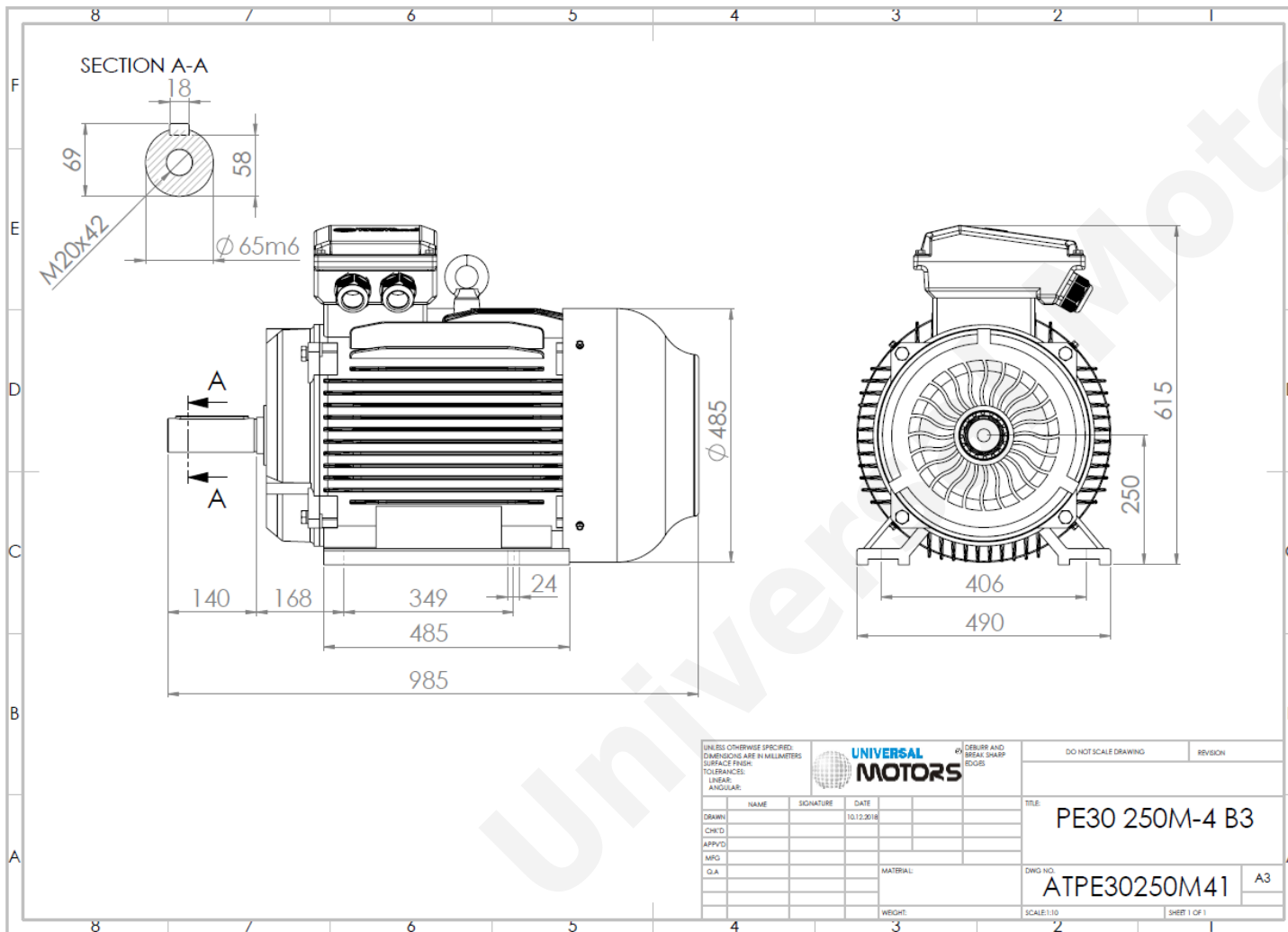




TECHNICAL DATA

Three Phase Electric Motors - Cast Iron Frame
 PE30 250M-8
 30 kW / 40 Cv
 735 RPM



Motor type:	PE30 250M-8
Output:	30 kW / 40 Cv
Speed (min ⁻¹):	735 RPM
Frequency:	50 Hz
Voltage:	400 V
Current:	60.0 A
Power factor (Cos Ø):	0.79
Poles:	8
Insulation class:	F
Temperature rise Class:	B
Efficiency 50%:	90.6 %
Efficiency 75%:	91.5 %
Efficiency 100%:	91.3 %
Torque:	389 N.m
Tstarting/Tnominal:	1.9
Istarting/Inominal:	6.5
Tmaximum/Tnominal:	2.0
Noise:	75 Db(A)
Weight:	426 Kg
Bearing DE:	6314 C3
Bearing NDE:	6314 C3

UNLESS OTHERWISE SPECIFIED: DIMENSIONS ARE IN MILLIMETERS SURFACE FINISH: TOLERANCES: LINEAR: ANGULAR:				UNIVERSAL MOTORS		#4 DEBURR AND BREAK SHARP EDGES		DO NOT SCALE DRAWING		REVISION	
DRAWN	NAME	SIGNATURE	DATE					TITLE: PE30 250M-4 B3			
CHK'D			10.12.2018								
APP'VD											
MRG											
Q.A.				MATERIAL:				DWG NO: ATPE30250M41			
				WEIGHT:				SCALE: 1:10			
								SHEET 1 OF 1			

Regime - S1

Altitude - 1000m

Environment Temperature - 40°C

CONTACTS:

UNIVERSAL MOTORS Tel: +351 252 299 080
 Rua de São Brás,745 Fax: +351 252 299 089
 4480-782 VILA DO CONDE Mail: geral@universalmotors.pt

* References applied only in the UK